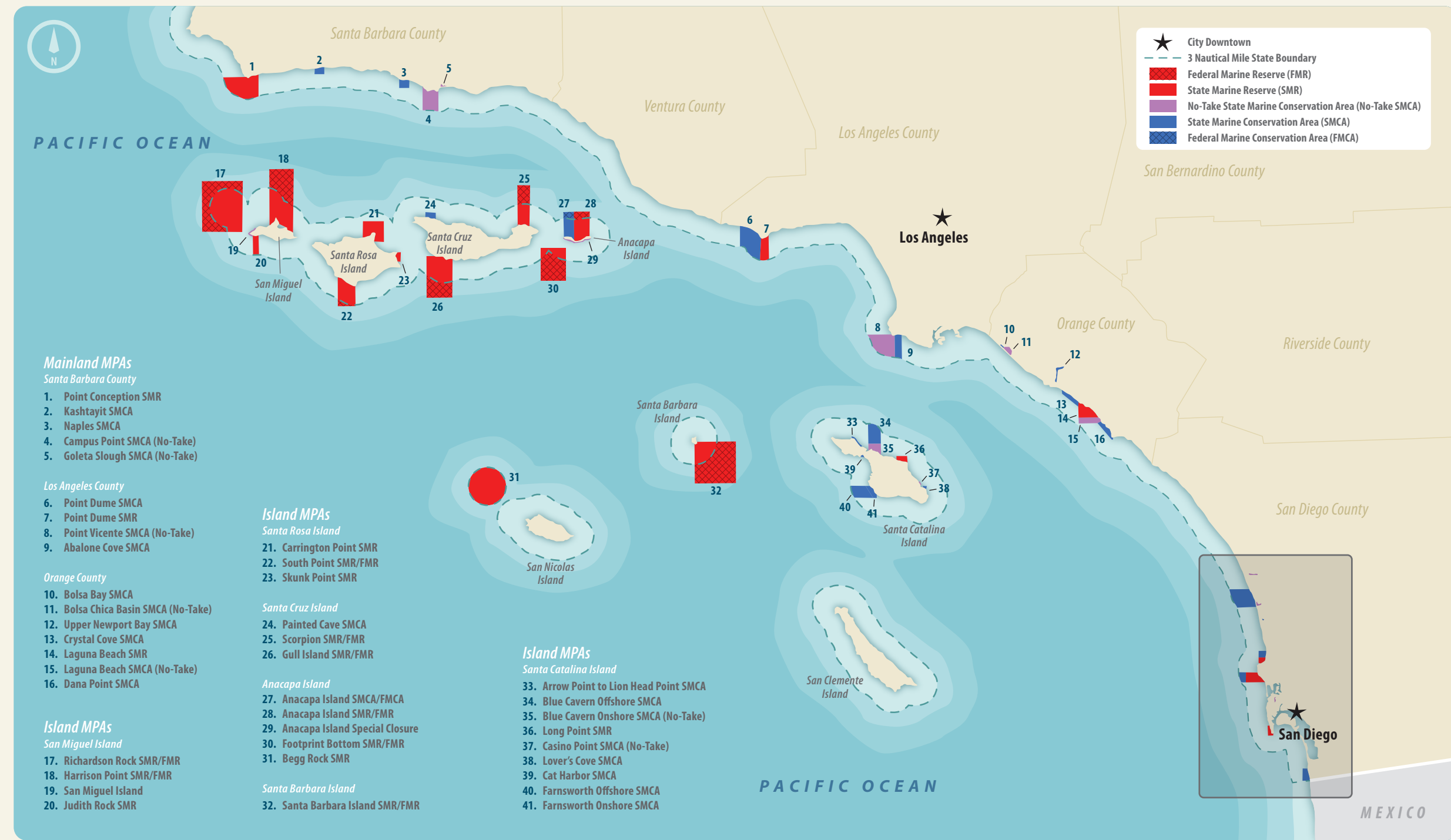
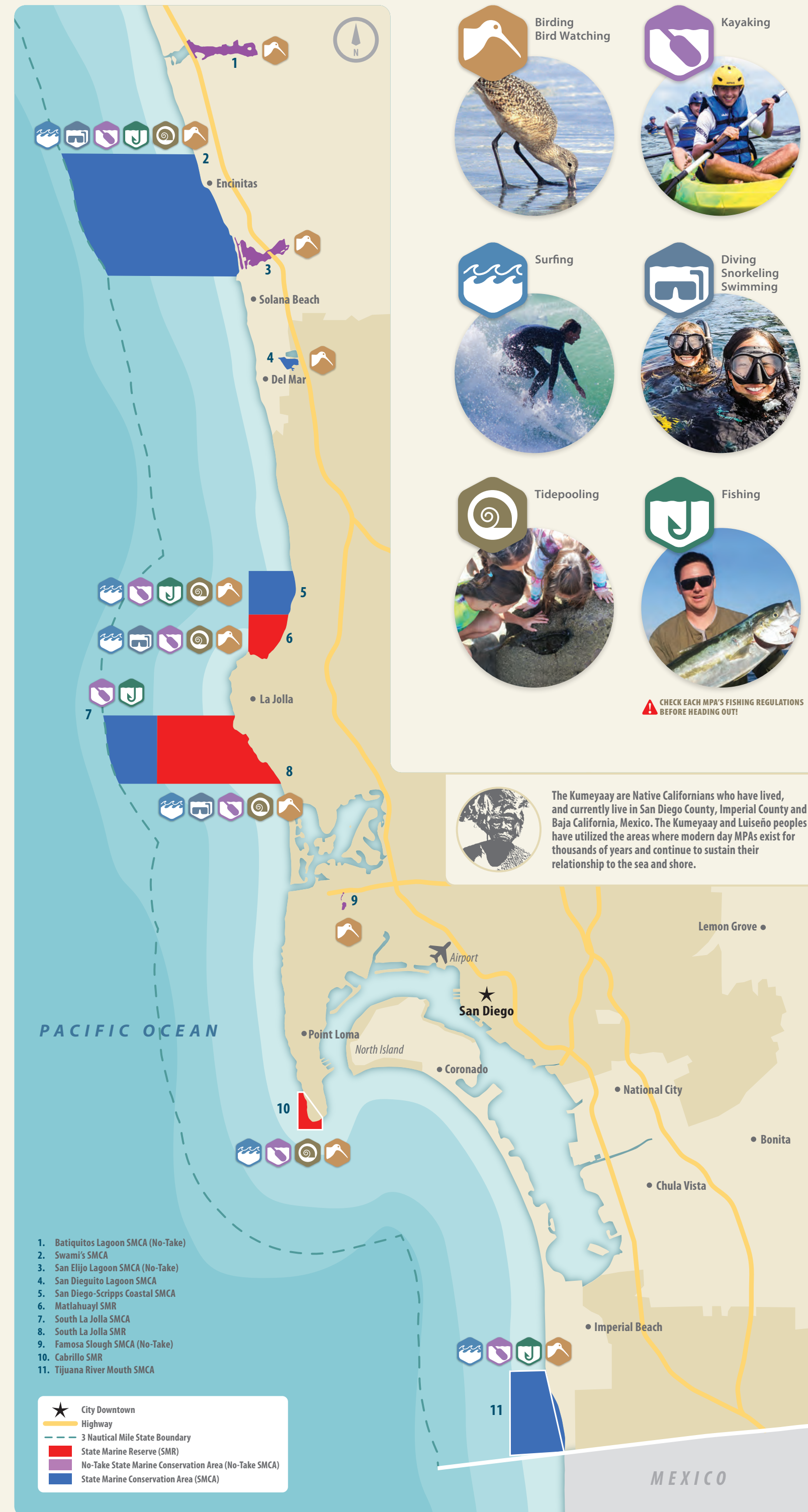


Southern California's MPAs



San Diego County



Tidepooling!

For a more engaging experience with marine organisms, plan a day for tidepooling! During low tide look for pools of water forming in rocky intertidal zones. Enjoy and explore these areas, but remember that removal and disturbance (including touching) are prohibited. For more tidepooling guidelines check out the "Good Tidepooler Rules."



The "Good Tidepooler Rules"

Follow these guidelines to minimize your impact on tidepool organisms and habitat:

- Never remove animals, shells or rocks from the tidepools
- Walk gently, taking care not to step on plants or animals
- Never pick up animals; observe them where they are
- Never turn over rocks



WILDCOAST is an international team that conserves coastal and marine ecosystems and wildlife. California's network of marine protected areas spans from the Oregon border south to Mexico and covers 16% of the state's ocean resources.

WILDCOAST is playing a leading role in the conservation and management of these globally significant MPAs. Through public engagement, policy development, monitoring and education, we are making sure that California's coastline and marine environment is as spectacular in the future as it is today.

For more information, please visit: [wildcoast.org](http://wildcoast.org)



TO REPORT VIOLATIONS IN ANY MARINE PROTECTED AREA CALL 1-888-334-CALIF (888-334-2258)

For detailed maps and regulations visit: [www.wildlife.ca.gov/MPAs](http://www.wildlife.ca.gov/MPAs)

This guide was made possible through generous support by the County of San Diego's Neighborhood Reinvestment Program and the Ocean Protection Council's MPA Collaborative Network Small Grants Program.

General coordination: Mariaeather Diaz & Cory Pukini - Scientific Information: WILDCOAST

Graphic Design: Rafael Rios - Illustrations: Sergio de la Rosa

Cover & back cover page photography: Ralph Pace

Copyright © 2018, WILDCOAST



San Diego County

Marine Protected Areas Wildlife and Recreation Guide

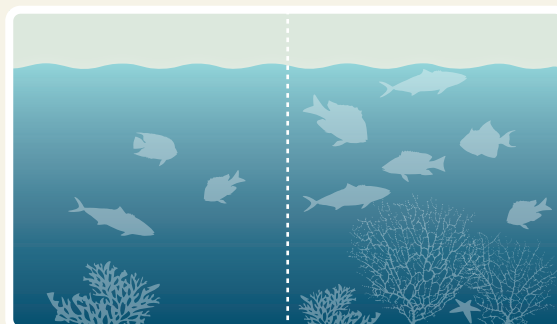


Marine Protected Areas (MPAs)

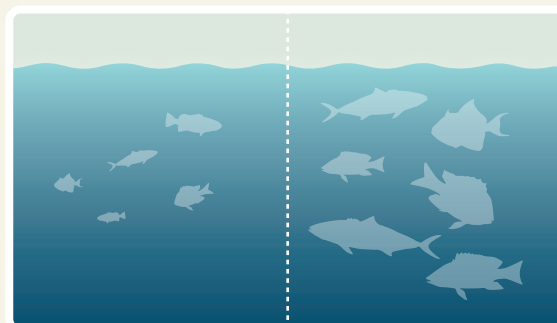
protect the diversity and abundance of marine life, the habitats they depend on, and the integrity of marine ecosystems. The Marine Life Protection Act recognizes that a combination of MPAs with varied amounts of allowed activities and protections (marine reserves, marine conservation areas, and marine parks) can help conserve biological diversity, provide a sanctuary for marine life, and enhance recreational and educational opportunities. MPAs can also provide scientific reference points to assist with resource management decisions, and protect a variety of marine habitats, communities, and ecosystems for their economic and intrinsic value, for generations to come.

Potential benefits of MPAs:

Increase in the total number of fish:  
Higher density = more sea life



Increase in the average size of fish:  
Increase in biomass = bigger and more abundant sea life



More and bigger sea life = a healthier ocean

There are 11 MPAs

established in San Diego County that fall under three categories:

State Marine Reserve (SMR)

Take, damage, injury, or possession of any marine resource (living, geological or cultural) is prohibited. Non-Consumptive recreational activities are encouraged.

**In San Diego County (See Map):**  
Matlahuayl  
South La Jolla  
Cabrillo

No-Take State Marine Conservation Area (SMCA)

No-Take of any living, geologic, or cultural resource is allowed, EXCEPT for take incidental to specified activities permitted by other agencies.

**In San Diego County (See Map):**  
Batiqitos Lagoon  
San Elijo Lagoon  
Famosa Slough

State Marine Conservation Area (SMCA)

Take, including fishing/harvest of some marine/resource is permitted. Some consumptive recreational and commercial activities are allowed at specific locations.

**In San Diego County (See Map):**  
Swami's  
San Dieguito Lagoon  
San Diego-Scripps Coastal  
South La Jolla  
Tijuana River Mouth



Although all of the animals found on this page can be seen in Southern California MPAs, those labeled with a star (\*) are more likely to gain a direct benefit from MPAs. Animals marked with a star have smaller home ranges and/or spend significant portions of their lives within MPAs. As these animals grow larger, their offspring can help repopulate adjacent waters.

▲ THE IMAGES OF ORGANISMS ARE NOT MADE TO SCALE

**Mammals**



Bottlenose dolphin  
*Tursiops*



Pacific whiteside dolphin  
*Lagenorhynchus obliquidens*

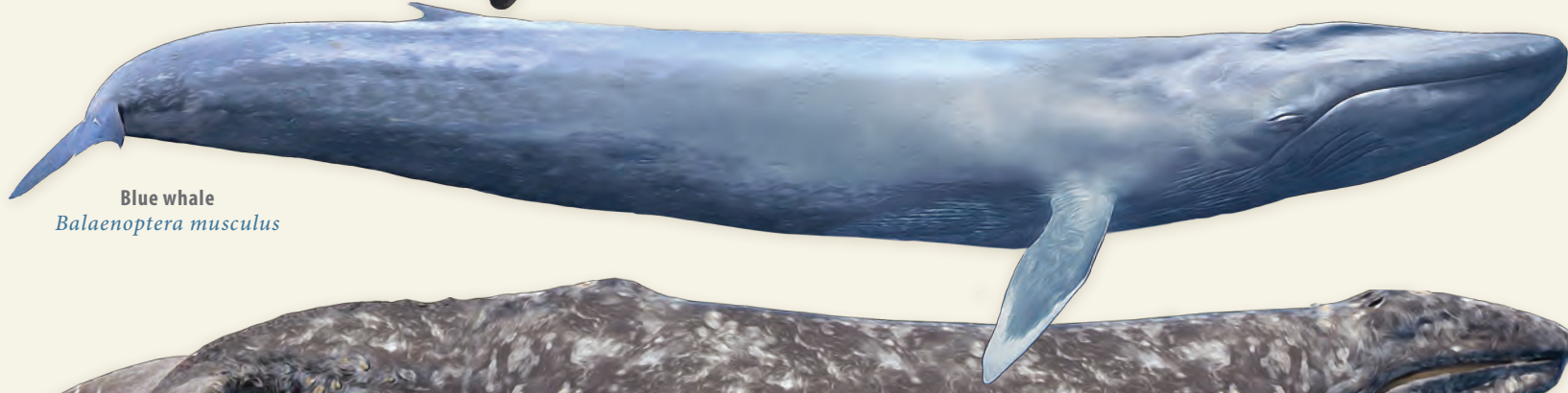


\*Harbor seal  
*Phoca*

**Mammals**



\*Sea lion  
*Otarinae*



Blue whale  
*Balaenoptera musculus*



Gray whale  
AKA Pacific gray whale, California gray whale  
*Eschrichtius robustus*

**Mammals**



Short beaked common dolphin  
*Delphinus delphis*

**Reptiles**



\*Green sea turtle  
AKA Green turtle, Pacific green turtle  
*Chelonia mydas*

**Birds**



\*Great blue heron  
*Ardea herodias*

**Birds**



\*Tern spp.  
*Sternidae*



\*Gull spp.  
*Laridae*



\*California least tern  
*Sterna antillarum browni*



Osprey  
AKA Sea hawk, River hawk, Fish hawk  
*Pandion haliaetus*

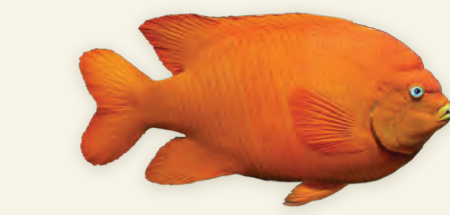


\*Double-crested cormorant  
*Phalacrocorax auritus*



\*Brown pelican  
*Pelecanus occidentalis*

**Fish**



Garibaldi  
AKA Garibaldi damselfish  
*Hypsypops rubicundus*



\*Blacksmith  
AKA Blacksmith chromis, Blacksmith damselfish  
*Chromis punctipinnis*



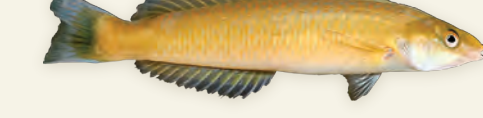
Giant kelpfish  
*Heterostichus rostratus*



\*Male California sheephead  
*Semicossyphus pulcher*



\*Female California sheephead  
*Semicossyphus pulcher*



Señorita  
*Oxyjulis californica*

**Fish**



\*California scorpionfish  
AKA Spotted scorpionfish  
*Scorpaena guttata*



Pacific seahorse  
*Hippocampus ingens*



\*Opaleye  
*Girella nigricans*



Californian killifish  
*Fundulus parvipinnis*



\*Goby spp.  
*Gobiidae*



Pacific jack mackerel  
AKA California jack mackerel  
*Trachurus symmetricus*

**Fish**



Topsmelt  
*Atherinops affinis Ayres*



Californian anchovy  
*Engraulis mordax*



Pacific sardine  
*Sardinops sagax*



\*Croaker spp.  
*Sciaenidae*



\*White sea bass  
*Atractoscion nobilis*



California corbina  
*Menticirrhus undulatus*

**Fish**



\*Rockfish spp.  
*Sebastes*



\*Kelp bass  
AKA Calico bass  
*Paralabrax clathratus*



\*Barred sand bass  
*Paralabrax nebulifer*



\*Spotted sand bass  
*Paralabrax maculatofasciatus*



\*Giant sea bass  
*Stereolepis gigas*



California halibut  
AKA California flounder  
*Paralichthys californicus*

**Fish**



Pacific bonito  
*Sarda chiliensis lineolata*



Sunfish  
AKA Mola  
*Mola mola*



\*Shovelnose guitarfish  
*Rhinobatos productus*



Bat ray  
*Myliobatis californica*



Round stingray  
AKA Haller's round ray  
*Urolophus halleri*



\*Leopard shark  
*Triakis semifasciata*

**Fish**



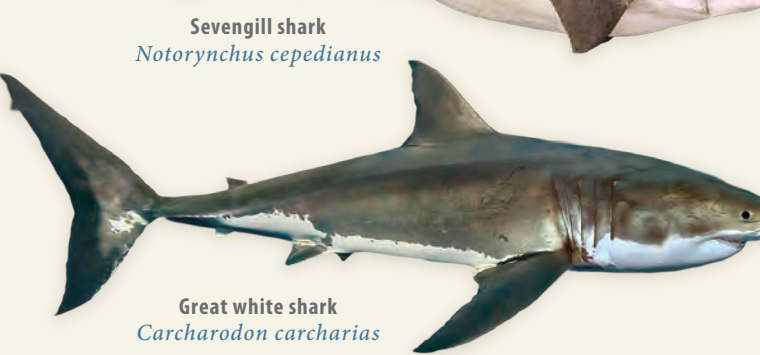
\*Horn shark  
*Heterodontus francisci*



Spiny dogfish  
AKA Spurdog, Mudshark, Piked dogfish  
*Squalus acanthias*

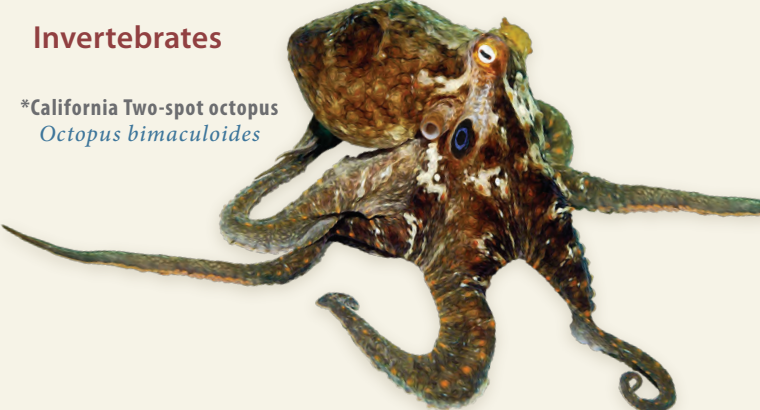


Sevengill shark  
*Notorynchus cepedianus*



Great white shark  
*Carcharodon carcharias*

**Invertebrates**



\*California Two-spot octopus  
*Octopus bimaculoides*

**Invertebrates**



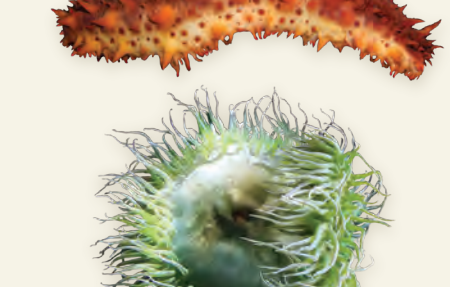
Bat star  
*Patiria miniata*



\*Purple sea star  
AKA Ochre sea star, Ochre starfish  
*Pisaster ochraceus*



Banded brittle star  
*Ophiolepis superba*



\*California sea cucumber  
*Parastichopus californicus*



Sea anemone spp.  
*Actiniaria*

**Invertebrates**



\*Wavy top turban  
*Megastraea undosa*



\*Abalone spp.  
*Haliotidae*



\*Sea snails  
*Gastropoda*



\*California spiny lobster  
*Panulirus interruptus*



\*Sea urchin  
*Echinoidea*



Western sand dollar  
AKA Pacific sand dollar  
*Dendraster excentricus*